

# Throttle / throttle check valves type BV700

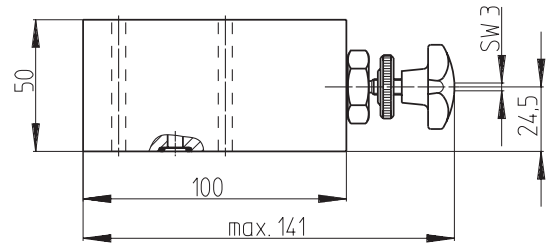
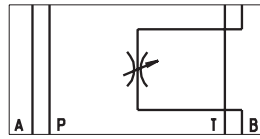
## NG 6 up to 700 bar up to 25 l/min

### Throttle valves

Design revision A  
Weight 1,9 kg

### Type

SD700-6-BB-25-P-A\*00  
SD700-6-BB-25-V-A\*00

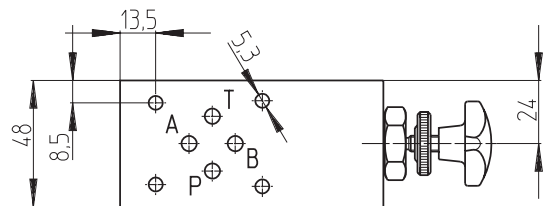
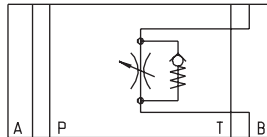


### Throttle check valves

Design revision A  
Weight 1,9 kg

### Type

SDRV700-6-BB-25-P-A\*00  
SDRV700-6-BB-25-V-A\*00

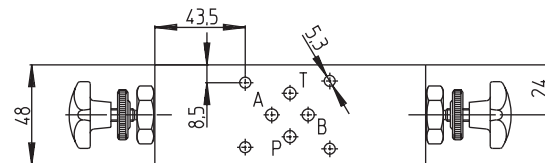
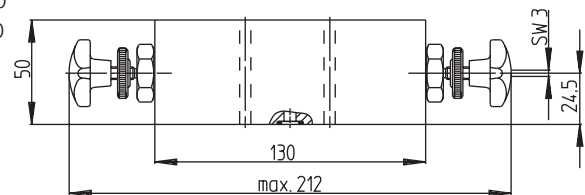
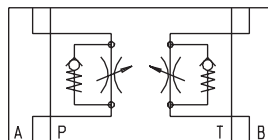


### Throttle check valves

Design revision A  
Weight 2,6 kg

### Type

SDRV700-6-AABB-25-P-A\*00  
SDRV700-6-AABB-25-V-A\*00



# Throttle / throttle check valves type BV700 NG 6 up to 700 bar up to 25 l/min

## Features

- High-precision control.
- Adjustable while under pressure.
- Leak-free in closed condition.
- Flow in either direction.
- Intermediate plate NG 6 to DIN 24340.
- Counter nut for flow rate limitation.



**BIERI**  
Hydraulik

### Throttle valves

- for inlet and outlet throttling
- as screw/in cartridge
- as intermediate plate valve

Controllable throttle valves are used for the adjustment of certain flow rates. The moving speed of a consumer can be influenced with the valves.

### Throttle check valves

For applications where the flow shall be throttled in one direction and be unthrottled in the other direction.

## Technical data

Hydraulic fluid	mineral oil according to DIN 51524 (other fluids on request)
Fluid temperature range	NBR: -30 to 80 °C FPM: -20 to 80 °C
Ambient temperature range	-30 to 50 °C
Viscosity range	5 to 400 cSt (optimal: 10 - 68 cSt)
Porting	NG 6 according to DIN 24340/ ISO 4401 / GETOP RP 121 H
Operating pressure max. connection P, A, B	700 bar
Pressure admissible max. connection T	350 bar
Flow rate max.	25 l/min
Filtration	according to NAS 1638, class 6 or ISO/DIN 4406 15/12
Weight	see dimension drawing
Material / surface treatment	steel parts: galvanized, black cromized cartridge: steel-corrosion resistant adjusting knob: cast iron

# Throttle / throttle check valves type BV700

## NG 6 up to 700 bar up to 25 l/min

### Accessoires

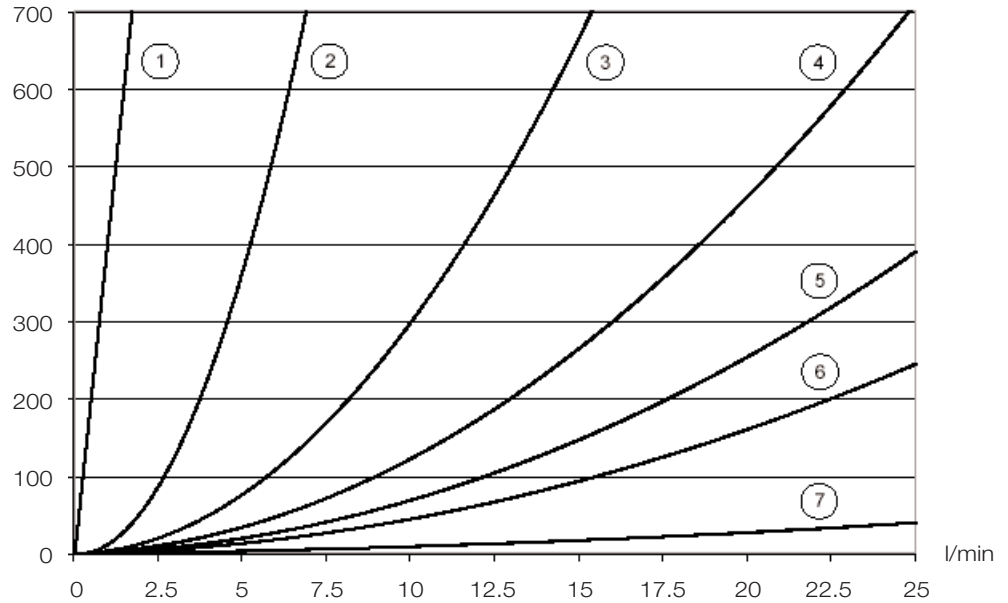
IFor each valve the following is included:  
 4 pieces O-rings 9,25 x 1,78 mm  
 90°ShA part no. 900195

Tie bolts / fixing screws and subplates  
 see technical data sheet AP / RP

Operating instructions see BA-BV700

### Characteristic intermediate plate valve

Measured at  $v = 32 \text{ cSt}$ ,  $T = 40 \text{ }^\circ\text{C}$  bar

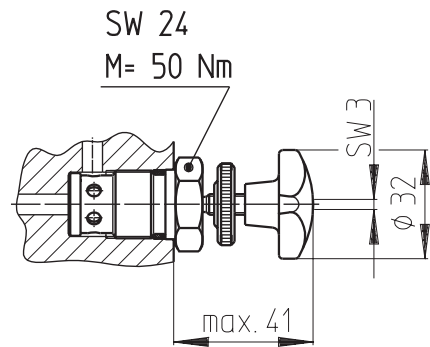


### Screw/in cartridges

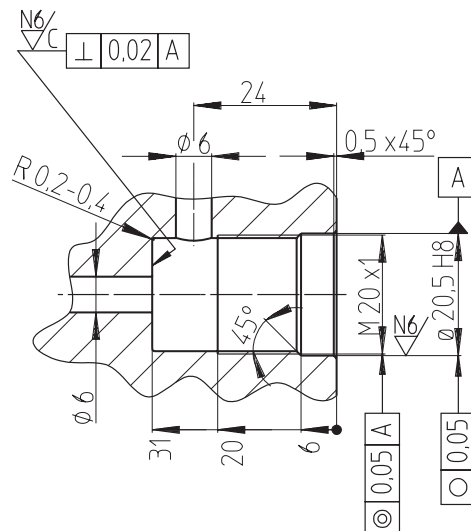
Design revision A  
 Weight 0,12 kg

### Type

SD700-6-E-25-P-A\*00  
 SD700-6-E-25-V-A\*00



### Bore dimension



# Throttle / throttle check valves type BV700

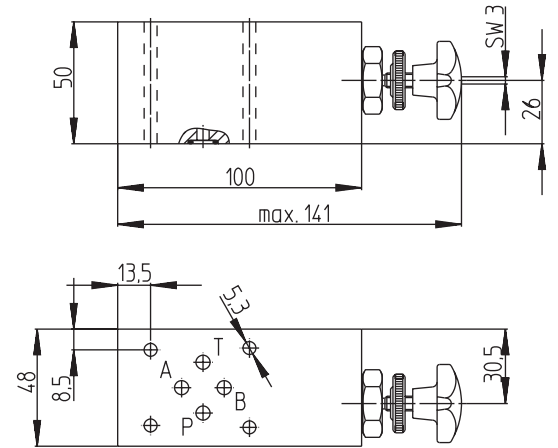
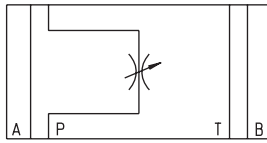
## NG 6 up to 700 bar up to 25 l/min

### Throttle valves

Design revision A  
Weight 1,9 kg

### Type

SD700-6-PP-25-P-A\*00  
SD700-6-PP-25-V-A\*00

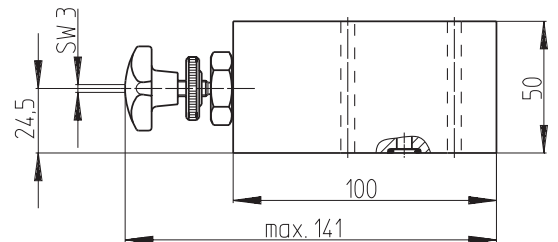
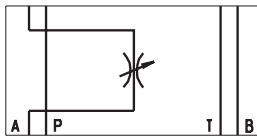


### Throttle valves

Design revision A  
Weight 1,9 kg

### Type

SD700-6-AA-25-P-A\*00  
SD700-6-AA-25-V-A\*00



### Throttle check valves

Design revision A  
Weight 1,9 kg

### Type

SDRV700-6-AA-25-P-A\*00  
SDRV700-6-AA-25-V-A\*00

